

HEAD-TO-HEAD COMPETITIVE ANALYSIS



Speed Queen® TR7



Maytag MVWP575

BUILT BETTER TO LAST LONGER™



COMPONENT COMPARISON

COMPONENTS COVERED

- » MOTOR
- » DRIVE SYSTEM
- » WASH TUB
- » OUTER TUB
- » SUSPENSION
- » DRAIN PUMP
- » WASH PERFORMANCE
- » FABRIC CARE

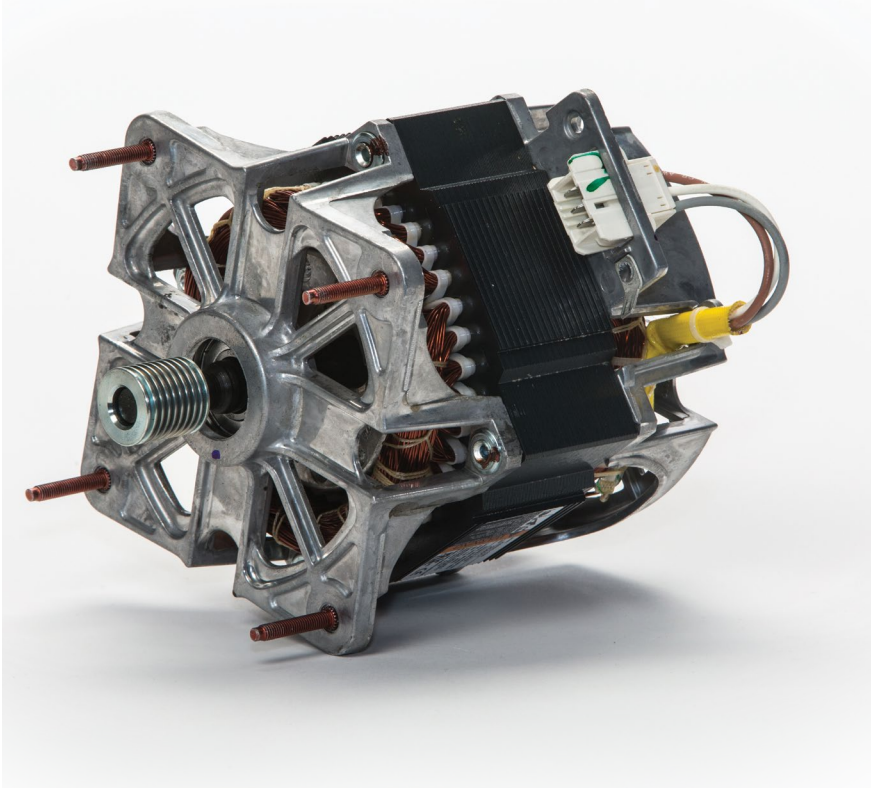
Maytag MVWP575

- » Residential version of the commercial MAT20 machine that was recently released
- » Maytag implying commercial grade quality
- » A component-to-component comparison between the Speed Queen® and Maytag products

MOTOR

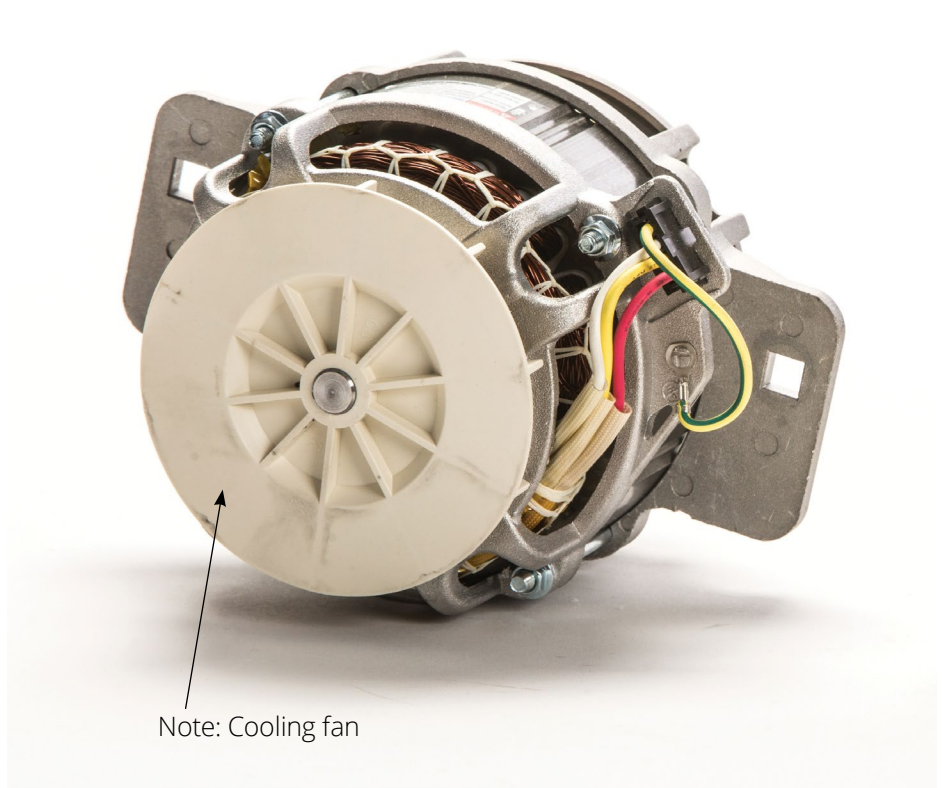
Speed Queen®

1 horsepower variable speed motor



Maytag

½ horsepower 4 speed motor



Winner: Speed Queen

Our high performance motor doesn't require a cooling fan and delivers twice the power as Maytag's motor. Its variable speed design is more flexible, offering a range of custom wash cycles, versus Maytag's four-speed design.

DRIVE SYSTEM

Speed Queen®

2-piece assembly, no plastic



Winner: Speed Queen

A rugged, yet simple design of two pieces means our drive system will deliver years of solid performance, but it can be easily serviced if a repair is ever necessary. Maytag's drive system has over 21 parts (many of them plastic) and is enclosed in a metal case, requiring the replacement of the full drive assembly versus just one part.

Maytag

21+ piece assembly

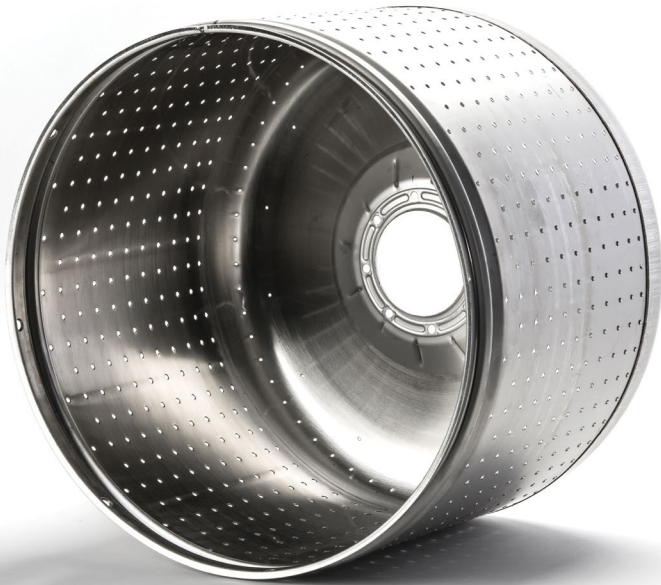
Plastic transmission & splutch



WASH TUB

Speed Queen®

Entire tub is premium stainless steel with a lifetime warranty



Maytag

Tub is part stainless and part plastic with a 5-year warranty



Winner: Speed Queen

Our all stainless wash tub is made of high-quality 200 series stainless steel, which is gentler on clothes and gets smoother over time. Maytag's tub is constructed with a combination of 400 series stainless and plastic, which can wear over time.

OUTER TUB

Speed Queen®

Porcelain over metal tub



Maytag

Plastic tub/insert molded bearing



Winner: Speed Queen

Our porcelain-coated metal tub is nonporous and mildew-/odor-resistant. It also has superior out-of-balance performance. Maytag's plastic tub is susceptible to odors/mildew and the inserted molded bearing requires that the tub and bearing be replaced together.

SUSPENSION

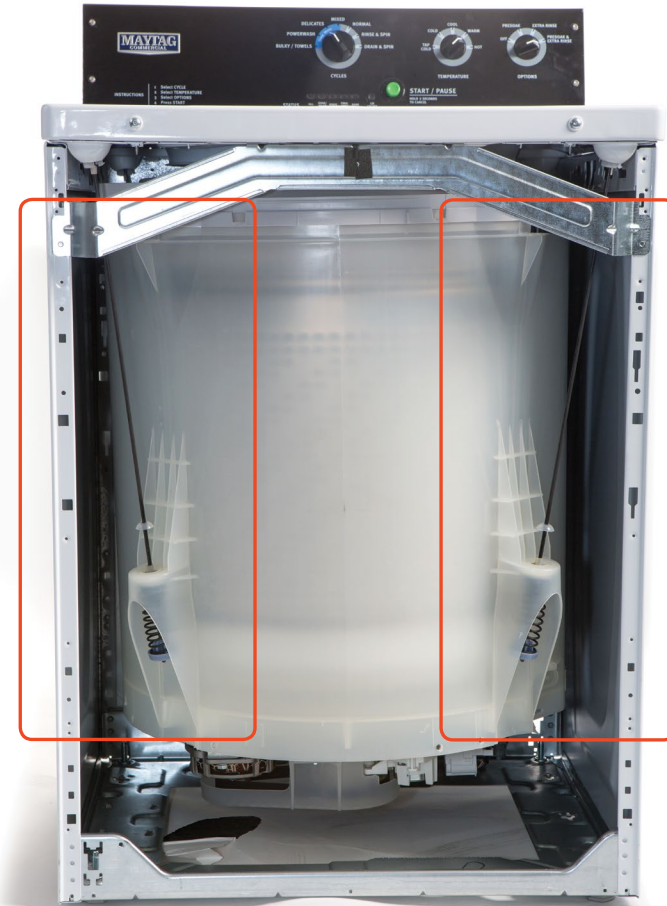
Speed Queen®

Robust full-steel base, 820 RPM & stable



Maytag

Hung strut design, 700 RPM



continues to next page

SUSPENSION

continued

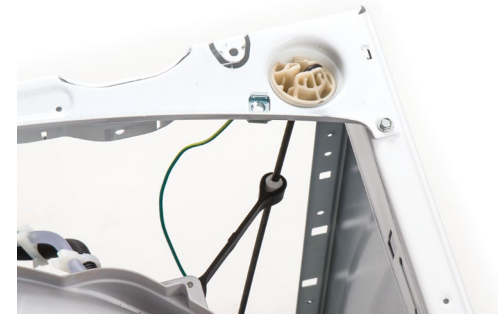
Speed Queen®

Robust full-steel base, 820 RPM & stable



Maytag

Hung strut design, 700 RPM



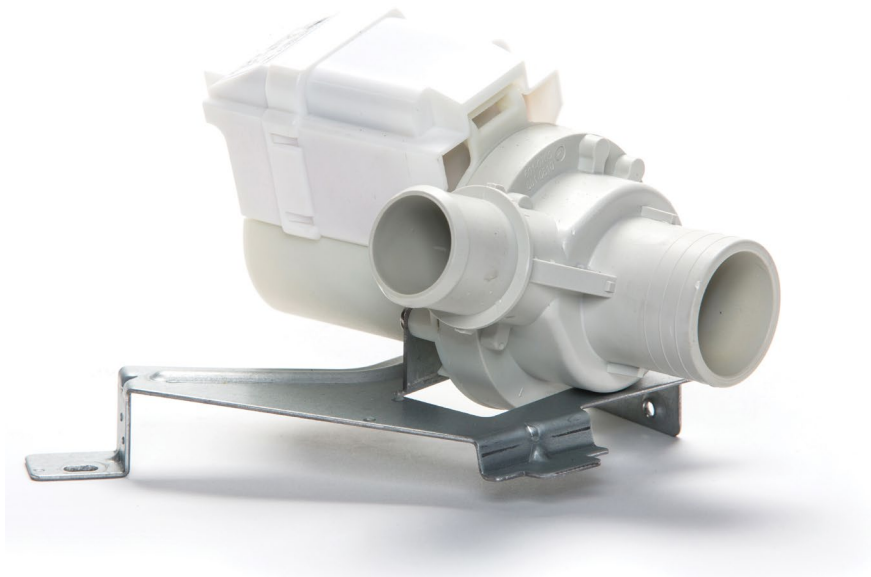
Winner: Speed Queen

Our suspension is mounted on a solid, full-steel base with six heavy-duty springs, which provides superior out-of-balance spin performance and water extraction. Spinning out ½ lb more water than Maytag and resulting in faster dry times.

DRAIN PUMP

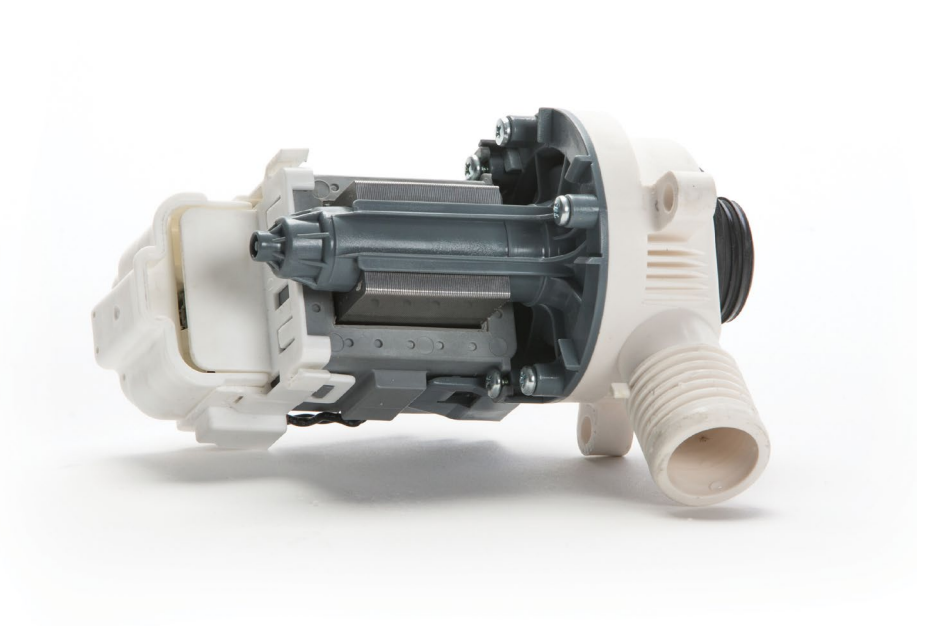
Speed Queen®

1.4 amp electric pump



Maytag

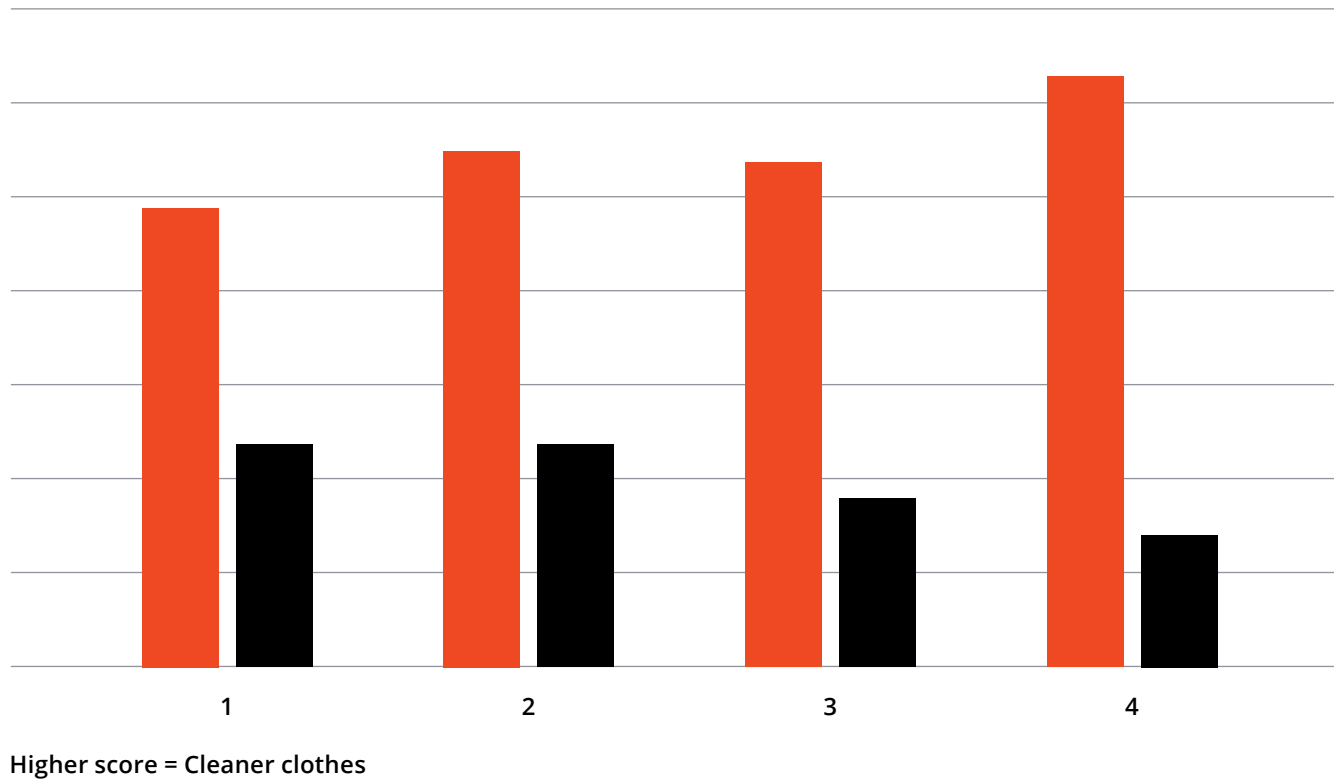
0.95 amp electric pump



Winner: Speed Queen

More power means commercial quality

WASHABILITY PERFORMANCE TESTING



8lb load - 3 run average:

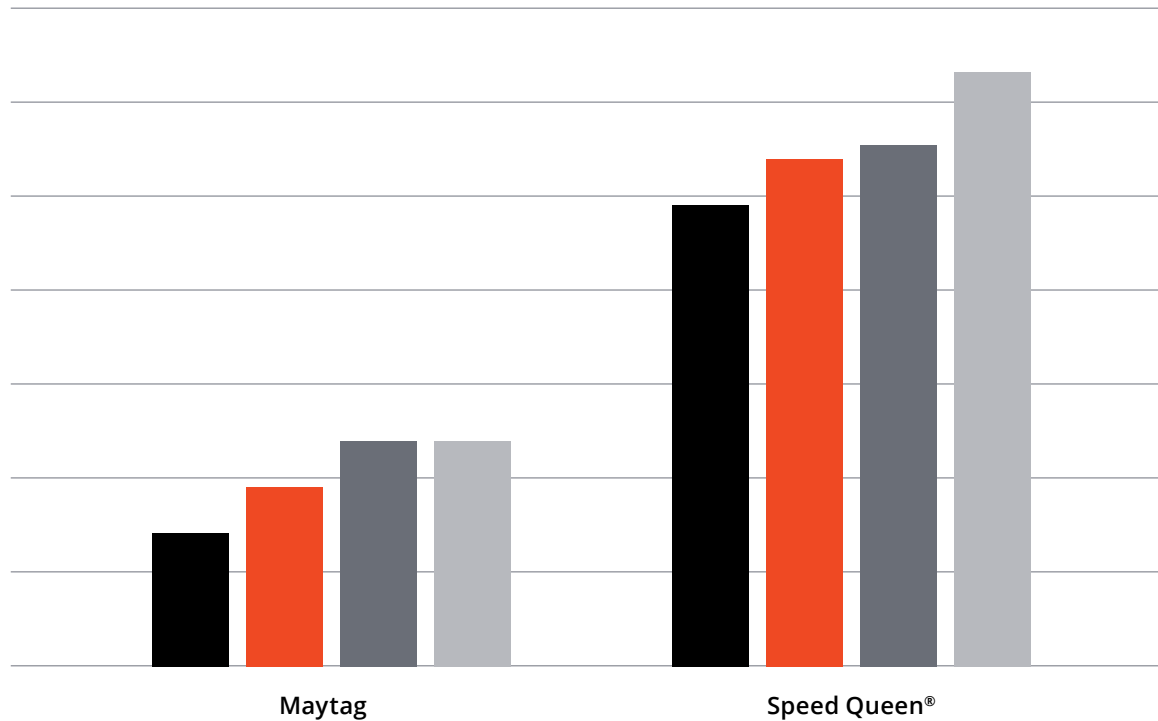
Maytag: mixed cycle/warm
Speed Queen®: heavy-duty /
warm / autofill / heavy soil

 Speed Queen TR7
 Maytag MVWP575

Tests per AHAM HLW-1-2013

Presoiled swatches are washed on similar cycles from one run. Scores measure the amount of light that passes through the soiled swatches. Higher score equates to more light passing through and a better wash.

WASHABILITY PERFORMANCE TESTING



Same data arranged by brand: Gap between Speed Queen & Maytag
Higher score = Cleaner clothes

8lb load – 3 run average:

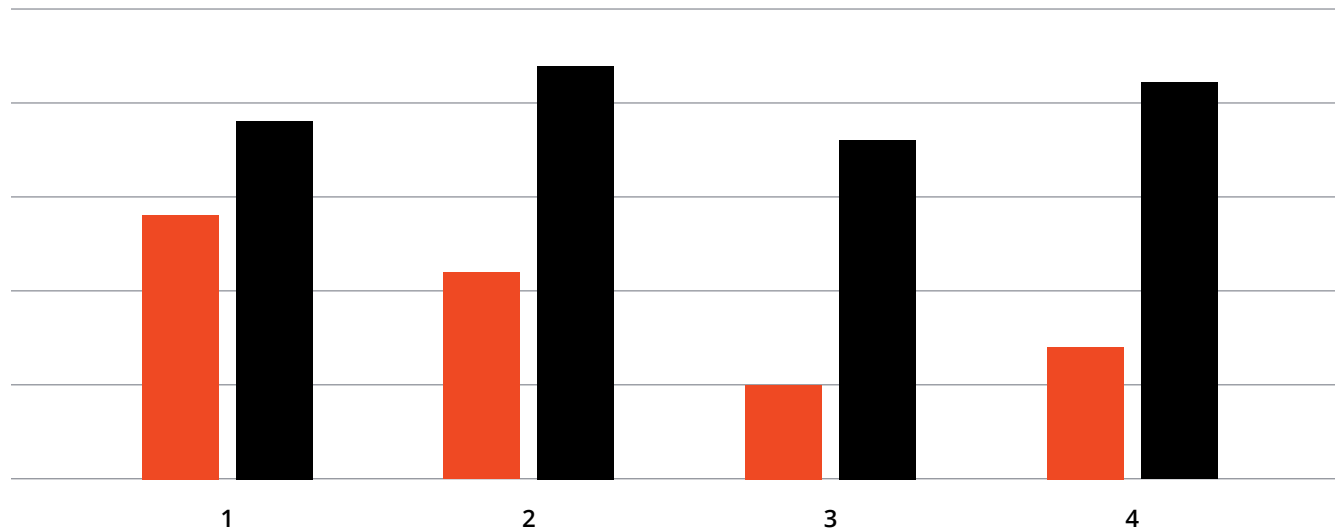
Maytag: mixed cycle/warm
Speed Queen: heavy-duty /
warm / autofill / heavy soil

-  Cloth 1
-  Cloth 2
-  Cloth 3
-  Cloth 4

Tests per AHAM HLW-1-2013

Presoiled swatches are washed on similar cycles from one run. Scores measure the amount of light that passes through the soiled swatches. Higher score equates to more light passing through and a better wash.

CLOTHES DAMAGE TESTING



Higher score = Damaged clothes

8lb load – 3 run average:

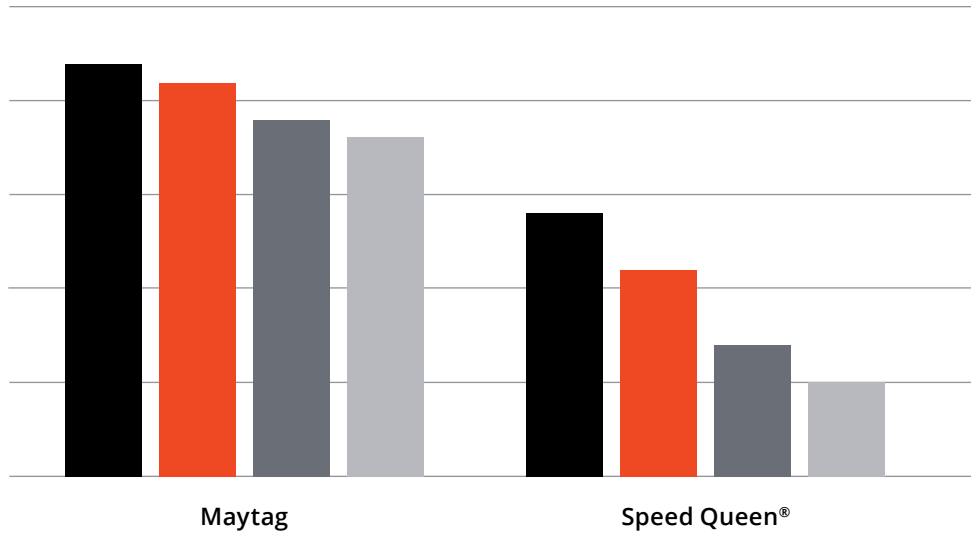
Maytag: mixed cycle/warm
Speed Queen®: heavy-duty /
warm / autofill / heavy soil

 Speed Queen TR7
 Maytag MVWP575

Tests per AHAM HLW-1-2013

Fabric damage swatches are washed on similar cycle for one run. Scores measure the count of threads that pull away from the pre-cut holes. Lower scores mean less threads have pulled away and the wash damaged the fabric less.

CLOTHES DAMAGE TESTING

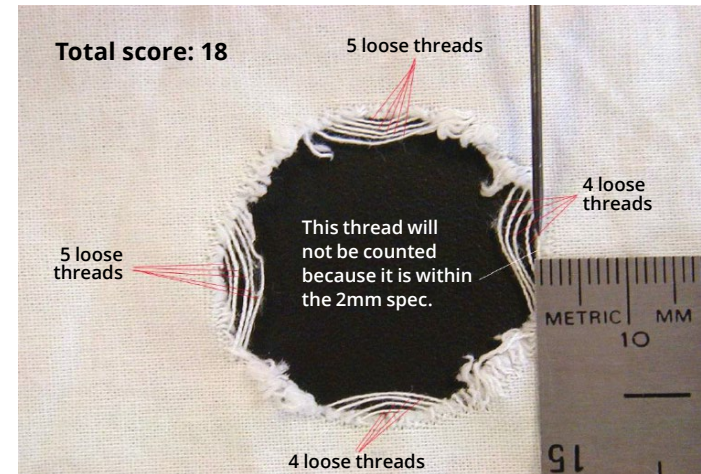


Same data arranged by brand: Gap between Speed Queen & Maytag
Higher score = Damaged clothes

8lb load – 3 run average:

Maytag: mixed cycle/warm
Speed Queen: heavy-duty / warm / autofill / heavy soil

- Cloth 1
- Cloth 2
- Cloth 3
- Cloth 4



Tests per AHAM HLW-1-2013

Fabric damage swatches are washed on similar cycle for one run. Scores measure the count of threads that pull away from the precut holes. Lower scores mean less threads have pulled away and the wash damaged the fabric less.

WINNERS: YOU & SPEED QUEEN®

PERFORMANCE

MOTOR

DRIVE SYSTEM

WASH TUB

OUTER TUB

SUSPENSION

DRAIN PUMP

WASH PERFORMANCE

FABRIC CARE